



Luminaire Photograph

1510.022F.3BTA 3000K
RISE



C Range: 0 - 360DEG
C Interval: 30.0DEG
Test Speed: HIGH
Temperature:25.3DEG
Operators:Lanjunbao
Test Date:2016-09-05

g Range: 0 - 180DEG
g Interval: 1.0DEG
Test System:EVERFINE GO-R3000(2M2D) SYSTEM V1.0.203
Humidity:65.0%
Test Distance:2.500m [K=1.0094]
Remarks: LAMP:HL-A-3014H421W-S1-08-HR3 3000K
DC 24V
30minutes warm-up



LUMINOUS INTENSITY DISTRIBUTION DIAGRAM

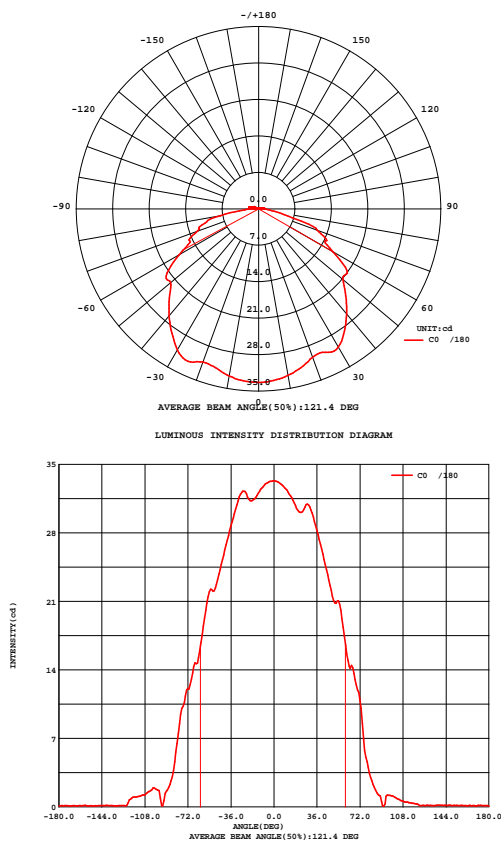


Fig. C0/C180

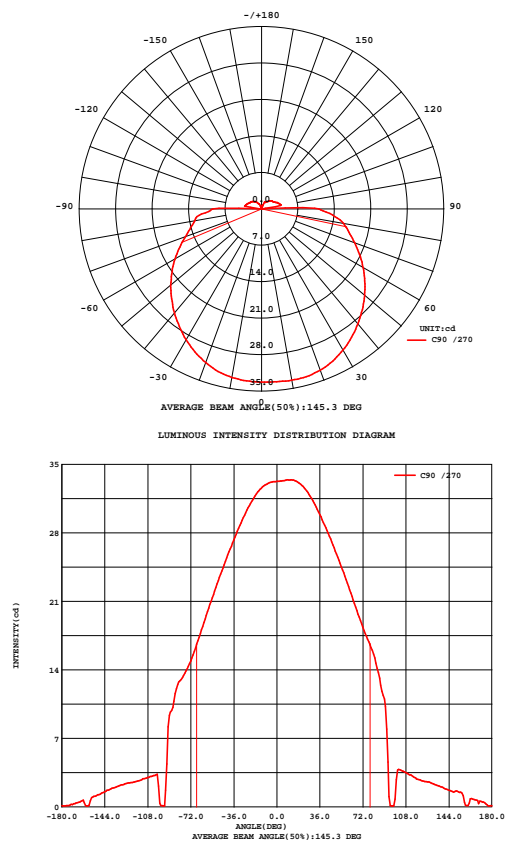


Fig. C90/C270

C Range: 0 - 360DEG
C Interval: 30.0DEG
Test Speed: HIGH
Temperature:25.3DEG
Operators:Lanjunbao
Test Date:2016-09-05

g Range: 0 - 180DEG
g Interval: 1.0DEG
Test System:EVERFINE GO-R3000(2M2D) SYSTEM V1.0.203
Humidity:65.0%
Test Distance:2.500m [K=1.0094]
Remarks: LAMP:HL-A-3014H421W-S1-08-HR3 3000K
DC 24V
30minutes warm-up

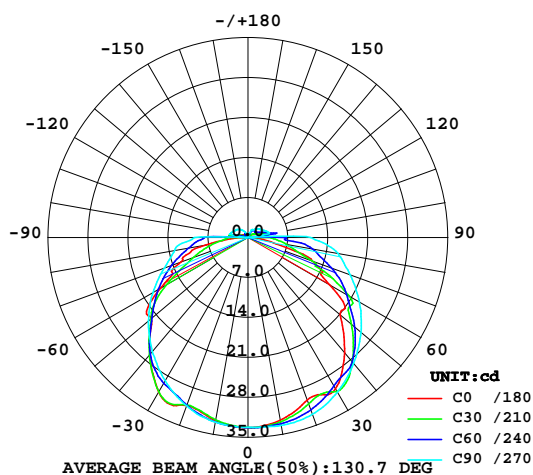


LUMINAIRE PHOTOMETRIC TEST REPORT

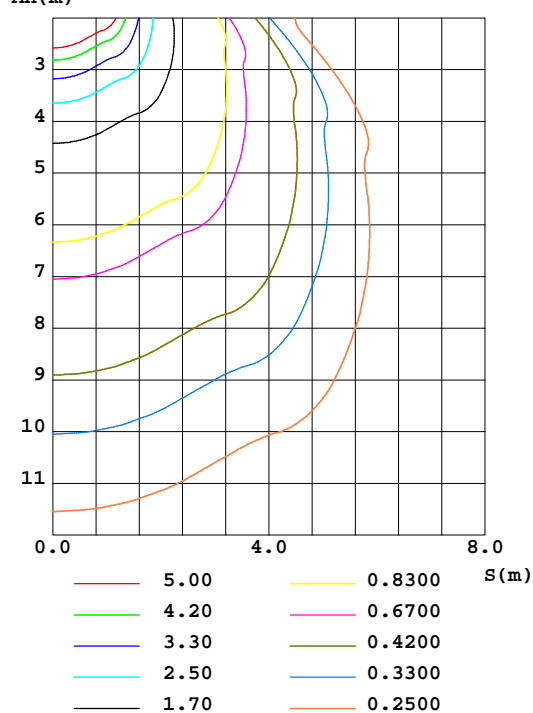
Test:U:24.00V I:0.0608A P:1.458W PF:0.9997 Lamp Flux:171.4x1 lm		
NAME: 1510.022F.3BTA	TYPE:	WEIGHT:
DIMENSION:	SPECIFICATION:3000K	SERIAL No.:1609058463
MANUFACTURER: RISE	SURFACE:0.0011m2	PROTECTION ANGLE:

DATA OF LAMP		PHOTOMETRIC DATA Eff: 89.56 lm/W			
MODEL	HONGLI 3014	Imax(cd)	33.42	S/MH(C0/180)	1.36
NOMINAL POWER(W)	1	EFFICIENCY(%)	76.2	S/MH(C90/270)	1.30
RATED VOLTAGE(V)	24	TOTAL FLUX(lm)	130.57	h UP(C0-180)	2.8
NOMINAL FLUX(lm)	171.37	CIE CLASS	DIRECT	h DN(C0-180)	34.1
LAMPS INSIDE	1	h up(%)	5.4	h UP(C180-360)	2.7
TEST VOLTAGE(V)	24.0	h down(%)	70.7	h DN(C180-360)	36.7

LUMINOUS INTENSITY DISTRIBUTION DIAGRAM



C0 PLANE ISOLUX DIAGRAM (UNIT:lx)



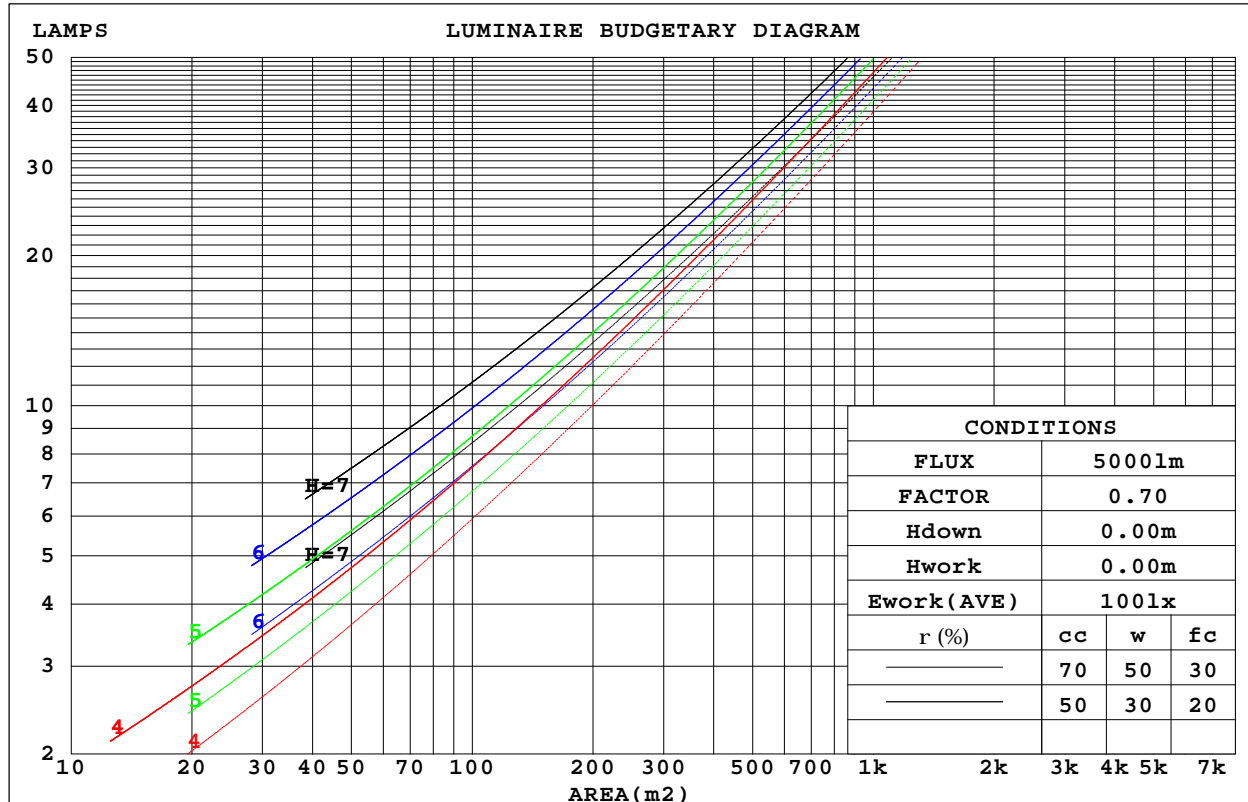
C Range: 0 - 360DEG
 C Interval: 30.0DEG
 Test Speed: HIGH
 Temperature:25.3DEG
 Operators:Lanjunbao
 Test Date:2016-09-05

g Range: 0 - 180DEG
 g Interval: 1.0DEG
 Test System:EVERFINE GO-R3000(2M2D) SYSTEM V1.0.203
 Humidity:65.0%
 Test Distance:2.500m [K=1.0094]
 Remarks: LAMP:HL-A-3014H421W-S1-08-HR3 3000K
 DC 24V
 30minutes warm-up



CU AND LUMINAIRE BUDGETARY ESTIMATE DIAGRAM

rcc	80%			70%			50%			30%			10%			0
rw	50%	30%	10%	50%	30%	10%	50%	30%	10%	50%	30%	10%	50%	30%	10%	0
rfc	20%			20%			20%			20%			20%			0
RCR	RCR:Room Cavity Ratio Coefficients of Utilization(CU)															
0.0	.89	.89	.89	.87	.87	.87	.82	.82	.82	.77	.77	.77	.73	.73	.73	.71
1.0	.75	.71	.68	.73	.69	.66	.69	.66	.63	.65	.62	.60	.61	.59	.57	.55
2.0	.64	.58	.53	.62	.57	.52	.59	.54	.50	.55	.52	.48	.52	.49	.46	.44
3.0	.56	.49	.44	.54	.48	.43	.51	.46	.41	.48	.44	.40	.46	.42	.39	.37
4.0	.49	.42	.36	.48	.41	.36	.45	.39	.35	.43	.38	.34	.40	.36	.33	.31
5.0	.44	.36	.31	.42	.36	.31	.40	.34	.30	.38	.33	.29	.36	.32	.28	.26
6.0	.39	.32	.27	.38	.31	.26	.36	.30	.26	.34	.29	.25	.33	.28	.24	.23
7.0	.35	.28	.23	.34	.28	.23	.33	.27	.23	.31	.26	.22	.30	.25	.22	.20
8.0	.32	.25	.21	.31	.25	.21	.30	.24	.20	.28	.23	.20	.27	.23	.19	.18
9.0	.29	.23	.19	.29	.23	.18	.27	.22	.18	.26	.21	.18	.25	.21	.17	.16
10.0	.27	.21	.17	.26	.21	.17	.25	.20	.16	.24	.19	.16	.23	.19	.16	.14



C Range: 0 - 360DEG
 C Interval: 30.0DEG
 Test Speed: HIGH
 Temperature: 25.3DEG
 Operators: Lanjunbao
 Test Date: 2016-09-05

g Range: 0 - 180DEG
 g Interval: 1.0DEG
 Test System: EVERFINE GO-R3000(2M2D) SYSTEM V1.0.203
 Humidity: 65.0%
 Test Distance: 2.500m [K=1.0094]
 Remarks: LAMP: HL-A-3014H421W-S1-08-HR3 3000K
 DC 24V
 30minutes warm-up



ZONAL FLUX DIAGRAM

ZONAL FLUX DIAGRAM:

g	C0	C45	C90	C135	C180	C225	C270	C315	g	F zone	F total	%lum,lamp
10	32.57	32.61	32.86	32.75	32.48	32.94	33.38	33.05	0- 10	3.155	3.155	2.42,1.84
20	31.30	31.24	31.39	31.21	30.32	31.60	32.95	32.05	10- 20	9.113	12.27	9.4,7.16
30	31.26	30.36	28.99	29.40	30.63	30.59	31.31	31.46	20- 30	14.34	26.61	20.4,15.5
40	26.75	26.76	26.06	26.99	26.31	28.42	28.79	28.90	30- 40	18.29	44.90	34.4,26.2
50	22.08	22.08	22.79	22.10	21.10	24.03	25.83	25.25	40- 50	19.61	64.51	49.4,37.6
60	17.62	17.26	19.20	17.79	16.49	20.19	22.51	20.98	50- 60	19.08	83.59	64,48.8
70	12.49	12.14	15.53	13.68	11.94	13.76	19.04	16.15	60- 70	16.38	99.97	76.6,58.3
80	7.464	8.225	13.03	9.901	3.445	9.109	15.98	12.24	70- 80	12.68	112.6	86.3,65.7
90	1.612	5.509	9.355	6.364	0.5634	5.321	11.02	8.034	80- 90	8.592	121.2	92.8,70.7
100	1.957	2.554	3.340	5.312	1.101	4.098	2.779	3.111	90-100	2.691	123.9	94.9,72.3
110	1.225	0.6693	2.930	2.798	0.4998	2.367	3.368	0.7571	100-110	2.563	126.5	96.9,73.8
120	0.8063	0.2712	2.545	1.837	0.3267	1.548	2.748	0.3223	110-120	1.440	127.9	98,74.7
130	0.1314	0.3877	2.259	1.587	0.1599	1.217	2.400	0.6101	120-130	0.9874	128.9	98.7,75.2
140	0.1698	0.4754	1.787	1.055	0.1926	0.9325	1.920	0.7453	130-140	0.7767	129.7	99.3,75.7
150	0.1296	0.4607	1.243	1.044	0.1375	1.023	1.646	0.7570	140-150	0.5242	130.2	99.7,76
160	0.1542	0.3992	0.1551	0.4158	0.1389	0.4033	0.1601	0.6993	150-160	0.2341	130.5	99.9,76.1
170	0.1203	0.2141	0.3287	0.1922	0.1251	0.2392	0.5947	0.4228	160-170	0.1011	130.6	100,76.2
180	0.1237	0.1158	0.1380	0.1436	0.0906	0.1436	0.1279	0.1424	170-180	0.0200	130.6	100,76.2
DEG	LUMINOUS INTENSITY:cd									UNIT:lm		

C Range: 0 - 360DEG
 C Interval: 30.0DEG
 Test Speed: HIGH
 Temperature:25.3DEG
 Operators:Lanjunbao
 Test Date:2016-09-05

g Range: 0 - 180DEG
 g Interval: 1.0DEG
 Test System:EVERFINE GO-R3000(2M2D) SYSTEM V1.0.203
 Humidity:65.0%
 Test Distance:2.500m [K=1.0094]
 Remarks: LAMP:HL-A-3014H421W-S1-08-HR3 3000K
 DC 24V
 30minutes warm-up



WEC AND CCEC

rcc	80%			70%			50%			30%			10%			0
rw	50%	30%	10%	50%	30%	10%	50%	30%	10%	50%	30%	10%	50%	30%	10%	0
rfc	20%			20%			20%			20%			20%			0
RCR	RCR:Room Cavity Ratio Wall Exitance Coefficients(WEC)															
0.0																
1.0	.287	.163	.052	.280	.160	.051	.267	.153	.049	.254	.147	.047	.243	.141	.045	
2.0	.253	.138	.042	.246	.136	.042	.234	.130	.040	.223	.125	.039	.213	.120	.038	
3.0	.226	.120	.036	.220	.118	.036	.210	.114	.035	.200	.109	.034	.190	.105	.033	
4.0	.204	.106	.031	.199	.104	.031	.190	.101	.030	.181	.097	.029	.172	.094	.028	
5.0	.186	.095	.027	.182	.093	.027	.173	.090	.027	.165	.087	.026	.157	.084	.025	
6.0	.171	.086	.025	.167	.084	.024	.159	.081	.024	.152	.079	.023	.145	.076	.023	
7.0	.158	.078	.022	.154	.077	.022	.147	.074	.021	.140	.072	.021	.134	.070	.020	
8.0	.147	.072	.020	.143	.071	.020	.137	.068	.020	.131	.066	.019	.125	.064	.019	
9.0	.137	.066	.018	.134	.065	.018	.128	.063	.018	.122	.061	.018	.117	.059	.017	
10.0	.128	.061	.017	.125	.060	.017	.120	.059	.017	.115	.057	.016	.110	.055	.016	

rcc	80%			70%			50%			30%			10%			0
rw	50%	30%	10%	50%	30%	10%	50%	30%	10%	50%	30%	10%	50%	30%	10%	0
rfc	20%			20%			20%			20%			20%			0
RCR	RCR:Room Cavity Ratio Ceiling Cavity Exitance Coefficients(CCEC)															
0.0	.187	.187	.187	.160	.160	.160	.109	.109	.109	.063	.063	.063	.020	.020	.020	
1.0	.183	.160	.140	.156	.138	.121	.107	.095	.083	.062	.055	.049	.020	.018	.016	
2.0	.177	.142	.113	.152	.123	.098	.104	.085	.068	.060	.049	.040	.019	.016	.013	
3.0	.172	.130	.096	.147	.112	.083	.101	.078	.058	.058	.045	.034	.019	.015	.011	
4.0	.166	.120	.085	.142	.104	.074	.098	.072	.052	.057	.042	.031	.018	.014	.010	
5.0	.160	.112	.077	.137	.097	.067	.094	.068	.047	.055	.040	.028	.018	.013	.009	
6.0	.154	.106	.071	.132	.092	.062	.091	.064	.044	.053	.038	.026	.017	.012	.009	
7.0	.149	.101	.067	.128	.087	.059	.088	.061	.042	.051	.036	.025	.017	.012	.008	
8.0	.143	.096	.064	.123	.084	.056	.085	.059	.040	.050	.035	.024	.016	.011	.008	
9.0	.139	.093	.062	.119	.080	.054	.083	.057	.038	.048	.033	.023	.016	.011	.008	
10.0	.134	.089	.060	.116	.078	.052	.080	.055	.037	.047	.032	.022	.015	.011	.007	

C Range: 0 - 360DEG
 C Interval: 30.0DEG
 Test Speed: HIGH
 Temperature:25.3DEG
 Operators:Lanjunbao
 Test Date:2016-09-05

g Range: 0 - 180DEG
 g Interval: 1.0DEG
 Test System:EVERFINE GO-R3000(2M2D) SYSTEM V1.0.203
 Humidity:65.0%
 Test Distance:2.500m [K=1.0094]
 Remarks: LAMP:HL-A-3014H421W-S1-08-HR3 3000K
 DC 24V
 30minutes warm-up



Uncorrected UGR Table

ceiling/cavity	0.7	0.7	0.5	0.5	0.3	0.7	0.7	0.5	0.5	0.3
walls	0.5	0.3	0.5	0.3	0.3	0.5	0.3	0.5	0.3	0.3
working plane	0.2	0.2	0.2	0.2	0.2	0.2	0.2	0.2	0.2	0.2
Room dimensions	Viewed crosswise					Viewed endwise				
x = 2H y = 2H	24.1	25.6	24.4	25.9	26.3	24.5	26.0	24.9	26.3	26.7
3H	25.8	27.2	26.2	27.6	28.0	26.8	28.2	27.2	28.6	28.9
4H	26.8	28.1	27.2	28.5	28.9	28.1	29.4	28.5	29.8	30.2
6H	27.7	29.0	28.2	29.4	29.8	29.5	30.8	30.0	31.2	31.6
8H	28.0	29.2	28.5	29.7	30.1	30.4	31.6	30.9	32.0	32.5
12H	28.2	29.4	28.6	29.8	30.3	31.4	32.6	31.8	33.0	33.5
4H 2H	24.7	26.1	25.1	26.4	26.9	25.1	26.4	25.5	26.8	27.2
3H	26.6	27.7	27.0	28.2	28.6	27.6	28.8	28.1	29.2	29.7
4H	27.6	28.7	28.1	29.2	29.7	29.1	30.1	29.5	30.6	31.1
6H	28.7	29.7	29.2	30.2	30.7	30.7	31.7	31.2	32.2	32.7
8H	29.1	30.0	29.6	30.5	31.0	31.7	32.6	32.2	33.1	33.7
12H	29.3	30.2	29.9	30.7	31.2	32.8	33.7	33.4	34.2	34.8
8H 4H	28.1	29.0	28.6	29.5	30.1	29.4	30.3	29.9	30.8	31.3
6H	29.3	30.1	29.9	30.6	31.2	31.3	32.1	31.9	32.6	33.2
8H	29.8	30.5	30.4	31.0	31.6	32.5	33.2	33.1	33.7	34.4
12H	30.2	30.8	30.8	31.3	32.0	33.9	34.5	34.5	35.1	35.7
12H 4H	28.3	29.1	28.8	29.6	30.2	29.4	30.2	29.9	30.7	31.3
6H	29.6	30.3	30.1	30.8	31.4	31.4	32.1	32.0	32.6	33.3
8H	30.1	30.7	30.7	31.3	31.9	32.7	33.3	33.3	33.9	34.5
Variations with the observer position at spacings:										
S = 1.0H	+ 0.1 / - 0.1					+ 0.1 / - 0.1				
1.5H	+ 0.2 / - 0.2					+ 0.2 / - 0.3				
2.0H	+ 0.2 / - 0.2					+ 0.2 / - 0.3				

CIE Pub.117 Corrected 171.4 lm Total Lamp Luminous Flux.(8log(F/F0) = -6.1)

C Range: 0 - 360DEG
 C Interval: 30.0DEG
 Test Speed: HIGH
 Temperature:25.3DEG
 Operators:Lanjunbao
 Test Date:2016-09-05

g Range: 0 - 180DEG
 g Interval: 1.0DEG
 Test System:EVERFINE GO-R3000(2M2D) SYSTEM V1.0.203
 Humidity:65.0%
 Test Distance:2.500m [K=1.0094]
 Remarks: LAMP:HL-A-3014H421W-S1-08-HR3 3000K
 DC 24V
 30minutes warm-up



UTILIZATION FACTORS TABLE

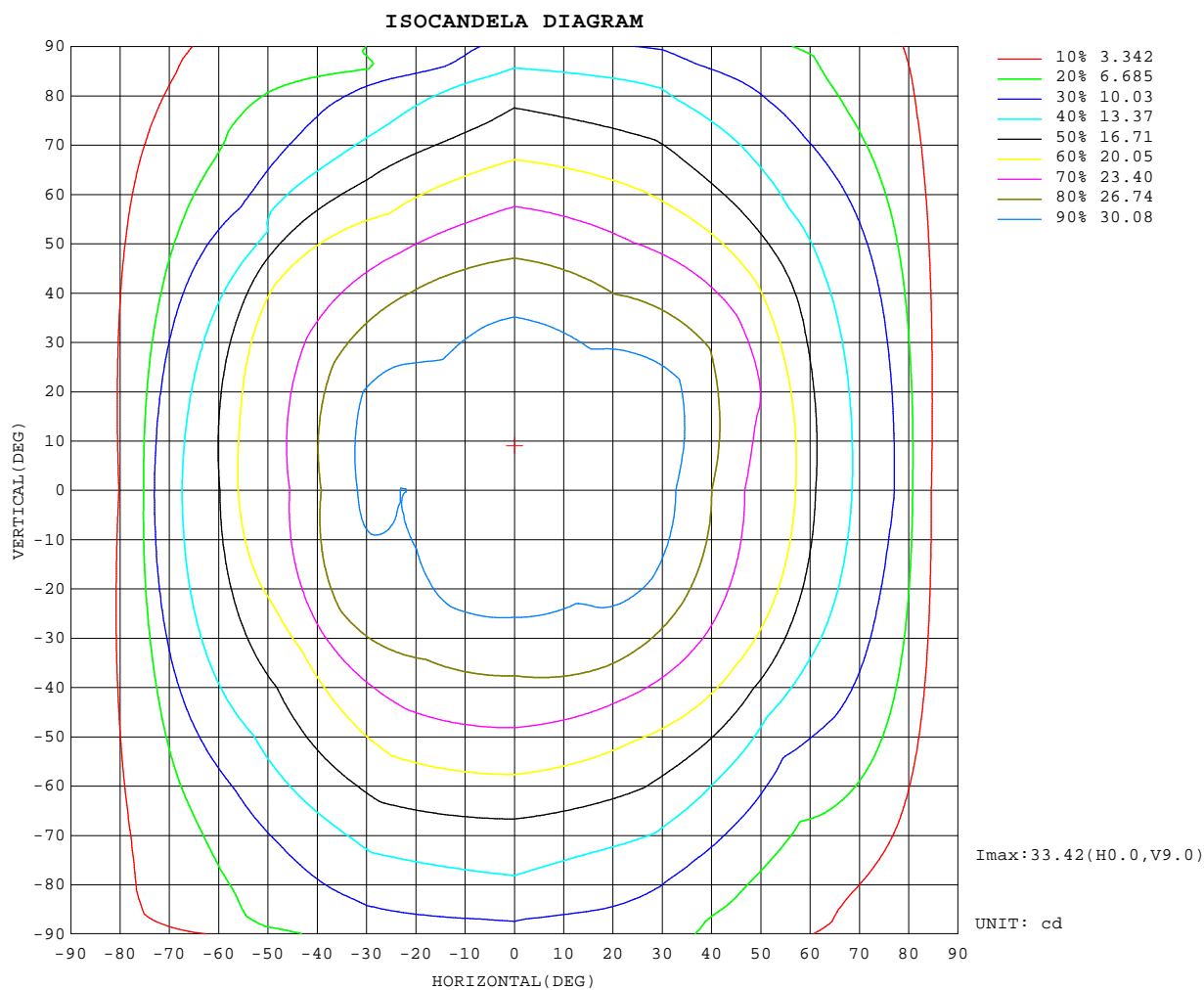
REFLECTANCE										
Ceiling	0.8	0.8	0.8	0.7	0.7	0.7	0.5	0.5	0.5	0
Walls	0.7	0.5	0.3	0.7	0.5	0.3	0.7	0.5	0.3	0
Working plane	0.2	0.2	0.2	0.2	0.2	0.2	0.2	0.2	0.2	0
ROOM INDEX	UTILIZATION FACTORS(PERCENT) $k(RI) \times RCR = 5$									
$k = 0.60$	39	30	24	39	30	24	37	29	24	19
0.80	47	37	31	46	36	31	44	36	30	24
1.00	53	43	37	51	43	37	49	43	36	30
1.25	58	49	43	57	48	42	54	47	41	35
1.50	62	53	47	60	52	46	57	50	45	38
2.00	67	60	54	66	58	53	62	56	51	44
2.50	71	63	58	69	62	57	65	59	55	47
3.00	73	67	62	71	65	61	67	62	58	50
4.00	77	71	67	75	70	65	70	66	63	54
5.00	79	74	70	77	72	69	72	69	66	57
ROOM INDEX	UF(total)									Direct
According to DIN EN 13032-2 2004			Suspended					SHRNOM = 1.25		

C Range: 0 - 360DEG
 C Interval: 30.0DEG
 Test Speed: HIGH
 Temperature: 25.3DEG
 Operators: Lanjunbao
 Test Date: 2016-09-05

g Range: 0 - 180DEG
 g Interval: 1.0DEG
 Test System: EVERFINE GO-R3000(2M2D) SYSTEM V1.0.203
 Humidity: 65.0%
 Test Distance: 2.500m [K=1.0094]
 Remarks: LAMP: HL-A-3014H421W-S1-08-HR3 3000K
 DC 24V
 30minutes warm-up



ISOCANDELA DIAGRAM

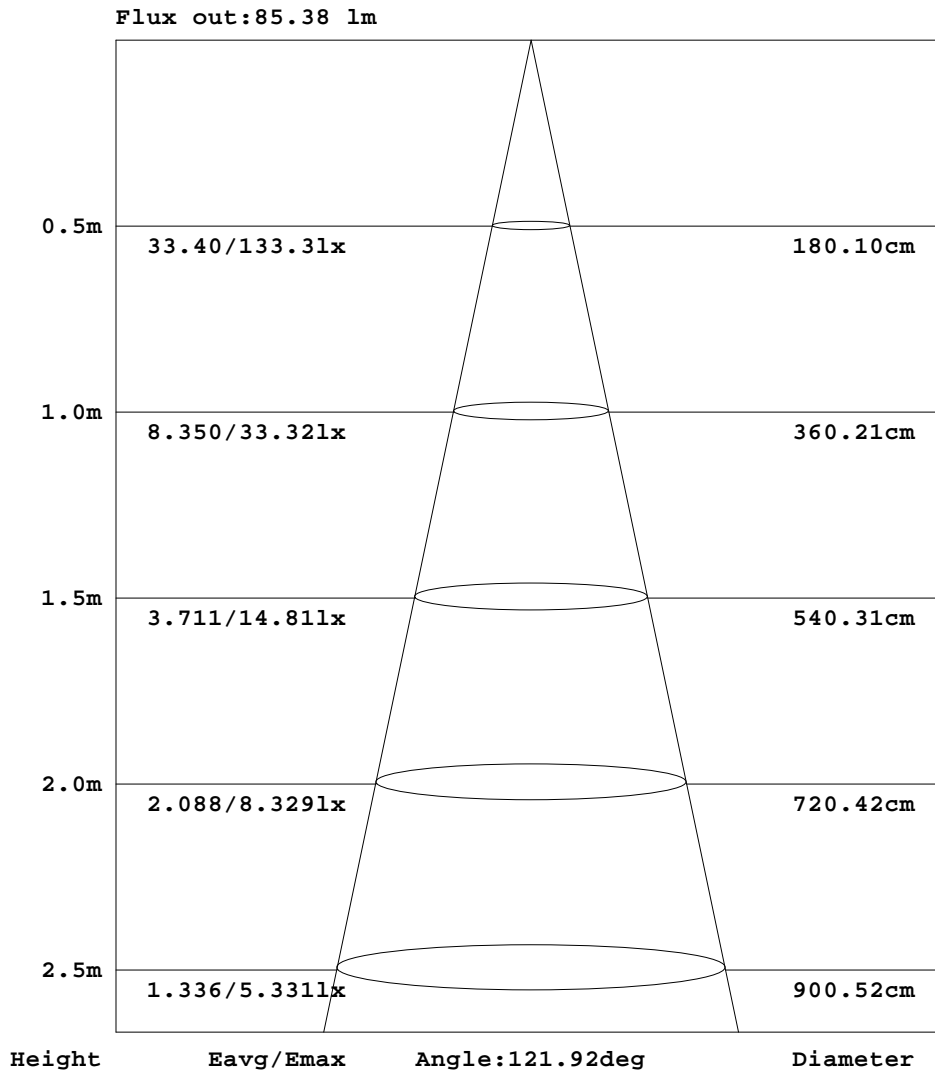


C Range: 0 - 360DEG
 C Interval: 30.0DEG
 Test Speed: HIGH
 Temperature: 25.3DEG
 Operators: Lanjunbao
 Test Date: 2016-09-05

g Range: 0 - 180DEG
 g Interval: 1.0DEG
 Test System: EVERFINE GO-R3000(2M2D) SYSTEM V1.0.203
 Humidity: 65.0%
 Test Distance: 2.500m [K=1.0094]
 Remarks: LAMP: HL-A-3014H421W-S1-08-HR3 3000K
 DC 24V
 30minutes warm-up



AAI Figure



Note:The Curves indicate the illuminated area and the average illumination when the luminaire is at different distance.

C Range: 0 - 360DEG
 C Interval: 30.0DEG
 Test Speed: HIGH
 Temperature:25.3DEG
 Operators:Lanjunbao
 Test Date:2016-09-05

g Range: 0 - 180DEG
 g Interval: 1.0DEG
 Test System:EVERFINE GO-R3000(2M2D) SYSTEM V1.0.203
 Humidity:65.0%
 Test Distance:2.500m [K=1.0094]
 Remarks: LAMP:HL-A-3014H421W-S1-08-HR3 3000K
 DC 24V
 30minutes warm-up



LUMINOUS DISTRIBUTION INTENSITY DATA

Table--1

UNIT: cd

C(°) g (°)	0	30	60	90	120	150	180	210	240	270	300	330						
0	33.3	33.3	33.3	33.2	33.2	33.2	33.3	33.3	33.3	33.2	33.2	33.2						
5	33.1	33.0	33.1	33.1	33.2	33.0	33.0	33.2	33.2	33.3	33.3	33.2						
10	32.6	32.4	32.8	32.9	32.9	32.6	32.5	32.8	33.1	33.4	33.3	32.8						
15	31.7	31.5	32.2	32.3	32.4	31.9	31.5	32.1	32.8	33.3	33.0	32.3						
20	31.3	31.2	31.3	31.4	31.6	30.8	30.3	31.0	32.2	33.0	32.5	31.6						
25	32.3	32.1	30.3	30.3	30.5	29.7	30.4	30.3	31.2	32.3	31.7	31.4						
30	31.3	31.2	29.5	29.0	29.2	29.6	30.6	31.1	30.1	31.3	30.6	32.3						
35	29.1	29.1	28.3	27.6	27.8	29.6	28.7	30.5	29.3	30.1	29.3	31.7						
40	26.8	26.9	26.6	26.1	26.2	27.8	26.3	28.4	28.4	28.8	27.9	29.9						
45	24.3	24.5	24.3	24.4	24.6	24.9	23.7	26.1	26.5	27.4	26.4	27.8						
50	22.1	22.2	21.9	22.8	22.9	21.3	21.1	23.7	24.4	25.8	24.8	25.7						
55	21.4	20.0	20.0	21.0	21.0	18.6	20.7	21.5	22.0	24.2	23.1	23.4						
60	17.6	16.4	18.1	19.2	19.2	16.4	16.5	20.4	19.9	22.5	21.4	20.6						
65	14.6	12.9	16.2	17.3	17.2	14.2	14.5	15.8	17.9	20.8	19.6	17.6						
70	12.5	10.1	14.2	15.5	15.3	12.0	11.9	12.0	15.6	19.0	17.9	14.4						
75	10.7	7.95	12.2	14.1	13.6	9.81	6.92	8.58	13.1	17.4	16.1	12.2						
80	7.46	5.94	10.5	13.0	12.1	7.73	3.45	6.74	11.5	16.0	14.2	10.3						
85	3.07	4.16	9.15	11.6	10.0	6.40	1.76	5.08	7.98	13.7	12.4	8.04						
90	1.61	3.38	7.64	9.35	9.11	3.62	0.56	3.95	6.70	11.0	9.81	6.26						
95	0.88	1.88	0.16	0.11	0.14	5.76	1.23	2.13	0.14	0.16	0.13	2.28						
100	1.96	2.52	2.58	3.34	5.39	5.23	1.10	3.59	4.60	2.78	1.68	4.54						
105	1.58	1.60	0.98	3.11	3.67	3.76	0.76	2.74	3.35	3.68	0.37	2.49						
110	1.23	1.06	0.28	2.93	2.81	2.79	0.50	2.05	2.69	3.37	0.19	1.32						
115	1.04	0.76	0.20	2.68	2.18	2.19	0.40	1.61	2.16	3.03	0.20	0.75						
120	0.81	0.32	0.22	2.54	1.97	1.71	0.33	1.26	1.83	2.75	0.40	0.25						
125	0.14	0.16	0.45	2.44	2.07	1.34	0.17	1.07	1.73	2.59	0.83	0.16						
130	0.13	0.13	0.65	2.26	2.08	1.09	0.16	0.85	1.58	2.40	1.06	0.16						
135	0.15	0.16	0.80	2.01	2.02	0.92	0.16	0.71	1.67	2.18	1.22	0.17						
140	0.17	0.12	0.83	1.79	1.86	0.25	0.19	0.17	1.70	1.92	1.26	0.23						
145	0.14	0.24	0.82	1.49	1.64	0.26	0.16	0.36	1.56	1.69	1.25	0.13						
150	0.13	0.18	0.74	1.24	1.37	0.72	0.14	0.64	1.41	1.65	1.18	0.33						
155	0.13	0.22	0.15	0.96	0.27	0.61	0.16	0.57	0.14	1.43	0.15	0.26						
160	0.15	0.25	0.54	0.16	0.39	0.44	0.14	0.52	0.29	0.16	0.82	0.58						
165	0.11	0.21	0.46	0.49	0.25	0.14	0.12	0.22	0.18	0.75	0.64	0.53						
170	0.12	0.14	0.29	0.33	0.15	0.23	0.13	0.31	0.17	0.59	0.42	0.42						
175	0.14	0.15	0.17	0.14	0.18	0.11	0.15	0.17	0.16	0.31	0.35	0.13						
180	0.12	0.11	0.12	0.14	0.16	0.13	0.09	0.15	0.13	0.13	0.15	0.13						

C Range: 0 - 360DEG
 C Interval: 30.0DEG
 Test Speed: HIGH
 Temperature: 25.3DEG
 Operators: Lanjunbao
 Test Date: 2016-09-05

g Range: 0 - 180DEG
 g Interval: 1.0DEG
 Test System: EVERFINE GO-R3000(2M2D) SYSTEM V1.0.203
 Humidity: 65.0%
 Test Distance: 2.500m [K=1.0094]
 Remarks: LAMP: HL-A-3014H421W-S1-08-HR3 3000K
 DC 24V
 30minutes warm-up



Photometric Data Table [cd]

G/C	0.0	30.0	60.0	90.0	120.0	150.0	180.0	210.0	240.0	270.0
0.0	33.32	33.26	33.29	33.24	33.24	33.24	33.32	33.26	33.29	33.24
3.0	33.25	33.18	33.22	33.22	33.19	33.17	33.20	33.30	33.31	33.27
6.0	33.05	32.93	33.09	33.12	33.16	32.99	32.96	33.11	33.23	33.32
9.0	32.69	32.56	32.92	32.92	32.99	32.71	32.61	32.90	33.14	33.42
12.0	32.25	32.07	32.60	32.69	32.78	32.33	32.15	32.52	32.99	33.42
15.0	31.66	31.52	32.17	32.31	32.40	31.89	31.54	32.05	32.78	33.32
18.0	31.31	31.19	31.70	31.79	31.96	31.29	30.80	31.46	32.44	33.11
21.0	31.44	31.32	31.04	31.20	31.39	30.60	30.16	30.80	31.96	32.84
24.0	32.19	32.03	30.39	30.56	30.73	29.87	30.15	30.30	31.41	32.45
27.0	32.09	32.00	29.88	29.79	30.02	29.44	30.87	30.40	30.80	31.90
30.0	31.26	31.23	29.49	28.99	29.20	29.61	30.63	31.11	30.07	31.31
33.0	29.96	29.99	28.92	28.15	28.37	29.96	29.63	30.93	29.48	30.62
36.0	28.68	28.70	28.04	27.24	27.47	29.33	28.25	30.11	29.17	29.86
39.0	27.23	27.36	26.99	26.35	26.52	28.16	26.83	28.87	28.72	29.04
42.0	25.75	25.91	25.77	25.44	25.55	26.74	25.26	27.55	27.69	28.24
45.0	24.27	24.46	24.32	24.42	24.56	24.86	23.70	26.12	26.54	27.36
48.0	22.74	23.03	22.84	23.46	23.59	22.73	22.10	24.67	25.25	26.45
51.0	22.03	21.83	21.55	22.41	22.54	20.72	20.83	23.14	23.95	25.51
54.0	21.96	20.52	20.41	21.35	21.40	19.01	21.06	21.72	22.48	24.54
57.0	20.08	18.64	19.27	20.31	20.30	17.70	19.22	21.69	21.14	23.58
60.0	17.62	16.41	18.11	19.20	19.17	16.41	16.49	20.44	19.95	22.51
63.0	15.24	14.20	16.96	18.10	18.03	15.15	14.35	17.52	18.77	21.48
66.0	14.71	12.20	15.78	16.98	16.87	13.81	14.22	14.59	17.47	20.42
69.0	13.05	10.56	14.61	15.91	15.66	12.50	12.45	12.74	16.06	19.38
72.0	12.10	9.224	13.43	14.92	14.57	11.14	11.00	10.18	14.50	18.37
75.0	10.66	7.951	12.24	14.13	13.58	9.806	6.919	8.580	13.15	17.41
78.0	9.427	6.741	11.15	13.41	12.68	8.465	4.624	7.316	12.20	16.56
81.0	6.491	5.542	10.19	12.88	11.74	7.385	2.999	6.560	11.04	15.60
84.0	3.721	4.407	9.425	12.08	10.43	6.592	2.049	5.430	9.357	14.16
87.0	2.310	3.750	8.283	10.17	9.575	6.172	1.311	4.498	6.395	12.45
90.0	1.612	3.384	7.635	9.355	9.106	3.622	0.5634	3.946	6.695	11.02
93.0	0.1097	0.1132	2.528	1.716	1.635	0.4720	0.2952	0.1278	0.1348	4.583
96.0	1.669	3.422	0.1787	0.1606	0.1143	5.747	1.205	1.672	0.2911	0.1200
99.0	1.846	2.791	1.610	2.145	5.250	5.497	1.137	3.660	5.134	0.7916
102.0	1.793	2.098	1.834	3.222	4.534	4.659	0.9665	3.337	3.810	3.844
105.0	1.582	1.604	0.9751	3.106	3.672	3.760	0.7565	2.741	3.353	3.682
108.0	1.241	1.289	0.4726	3.012	3.154	3.152	0.5924	2.285	2.995	3.521
111.0	1.157	0.9915	0.1704	2.903	2.676	2.659	0.4957	1.945	2.564	3.281
114.0	1.073	0.8075	0.1953	2.720	2.286	2.257	0.4279	1.665	2.269	3.112
117.0	1.040	0.5524	0.1999	2.631	1.999	1.965	0.3670	1.448	2.020	2.871
120.0	0.8063	0.3189	0.2235	2.545	1.966	1.708	0.3267	1.263	1.833	2.748
123.0	0.1726	0.1152	0.3079	2.471	2.067	1.503	0.1381	1.146	1.734	2.618
126.0	0.1610	0.1452	0.4923	2.397	2.101	1.304	0.1470	1.030	1.721	2.572
129.0	0.1575	0.1495	0.6122	2.269	2.103	1.125	0.1871	0.8926	1.579	2.475
132.0	0.1237	0.1711	0.7169	2.158	2.059	0.9649	0.1595	0.7393	1.613	2.309
135.0	0.1460	0.1583	0.7957	2.010	2.023	0.9174	0.1625	0.7075	1.674	2.184
138.0	0.1448	0.1187	0.8436	1.909	1.927	0.8100	0.1738	0.6387	1.744	2.042
141.0	0.1437	0.1214	0.8093	1.715	1.833	0.1570	0.1730	0.1686	1.676	1.836
144.0	0.1455	0.1652	0.8131	1.558	1.669	0.1365	0.1774	0.2180	1.580	1.724
147.0	0.1556	0.2430	0.7562	1.389	1.582	0.6864	0.1690	0.6251	1.520	1.571
150.0	0.1296	0.1840	0.7375	1.243	1.369	0.7197	0.1375	0.6397	1.407	1.646
153.0	0.1599	0.1244	0.6878	1.095	1.205	0.6529	0.1907	0.6361	0.2509	1.498
156.0	0.1191	0.2636	0.1341	0.6268	0.1377	0.5814	0.1498	0.5646	0.1261	1.149
159.0	0.1470	0.2635	0.4253	0.1281	0.2391	0.5176	0.1613	0.5186	0.2973	0.1374
162.0	0.1429	0.2439	0.5177	0.6993	0.3444	0.2888	0.1281	0.4296	0.2553	0.8422
165.0	0.1102	0.2117	0.4631	0.4938	0.2543	0.1408	0.1221	0.2200	0.1757	0.7533
168.0	0.1338	0.1621	0.3526	0.4065	0.1965	0.2516	0.1399	0.2962	0.1621	0.6733
171.0	0.1167	0.1301	0.2056	0.2351	0.1652	0.2160	0.1708	0.1832	0.1213	0.5570
174.0	0.1403	0.1690	0.1892	0.1587	0.1718	0.1610	0.1462	0.1273	0.1619	0.4377
177.0	0.1364	0.1417	0.1100	0.1028	0.1279	0.1267	0.1533	0.1207	0.1293	0.1118
180.0	0.1237	0.1124	0.1192	0.1380	0.1584	0.1288	0.0906	0.1526	0.1346	0.1279
G/C	300.0	330.0								
0.0	33.24	33.24								
3.0	33.27	33.23								
6.0	33.27	33.11								
9.0	33.27	32.95								
12.0	33.21	32.65								
15.0	33.00	32.33								
18.0	32.75	31.83								
21.0	32.38	31.48								
24.0	31.89	31.38								
27.0	31.32	31.74								
30.0	30.60	32.33								

C Range: 0 - 360DEG
C Interval: 30.0DEG
Test Speed: HIGH
Temperature:25.3DEG
Operators:Lanjunbao
Test Date:2016-09-05

g Range: 0 - 180DEG
g Interval: 1.0DEG
Test System:EVERFINE GO-R3000(2M2D) SYSTEM V1.0.203
Humidity:65.0%
Test Distance:2.500m [K=1.0094]
Remarks: LAMP:HL-A-3014H421W-S1-08-HR3 3000K
DC 24V
30minutes warm-up



Photometric Data Table [cd]

33.0	29.87	32.12
36.0	29.05	31.42
39.0	28.21	30.33
42.0	27.36	29.11
45.0	26.39	27.81
48.0	25.44	26.53
51.0	24.47	25.21
54.0	23.49	23.83
57.0	22.44	22.30
60.0	21.38	20.59
63.0	20.33	18.79
66.0	19.26	16.90
69.0	18.22	14.92
72.0	17.24	13.47
75.0	16.12	12.19
78.0	14.96	11.06
81.0	13.82	9.882
84.0	12.95	8.519
87.0	10.93	7.296
90.0	9.807	6.261
93.0	0.1043	0.1953
96.0	0.2010	5.103
99.0	2.208	5.163
102.0	0.9658	3.508
105.0	0.3675	2.488
108.0	0.2097	1.754
111.0	0.1877	1.218
114.0	0.1794	0.8719
117.0	0.1968	0.5363
120.0	0.3951	0.2495
123.0	0.6993	0.1219
126.0	0.8608	0.1682
129.0	1.033	0.1647
132.0	1.121	0.1578
135.0	1.217	0.1667
138.0	1.270	0.2790
141.0	1.275	0.1544
144.0	1.246	0.1279
147.0	1.218	0.4536
150.0	1.184	0.3299
153.0	0.3138	0.1694
156.0	0.1191	0.4632
159.0	0.8378	0.5713
162.0	0.7817	0.5688
165.0	0.6424	0.5290
168.0	0.2074	0.5003
171.0	0.4764	0.3503
174.0	0.3775	0.1478
177.0	0.1671	0.1160
180.0	0.1524	0.1324

C Range: 0 - 360DEG
 C Interval: 30.0DEG
 Test Speed: HIGH
 Temperature: 25.3DEG
 Operators: Lanjunbao
 Test Date: 2016-09-05

g Range: 0 - 180DEG
 g Interval: 1.0DEG
 Test System: EVERFINE GO-R3000(2M2D) SYSTEM V1.0.203
 Humidity: 65.0%
 Test Distance: 2.500m [K=1.0094]
 Remarks: LAMP: HL-A-3014H421W-S1-08-HR3 3000K
 DC 24V
 30minutes warm-up